



# Exhibition Spaces

---

ART BIENNIAL SPACES

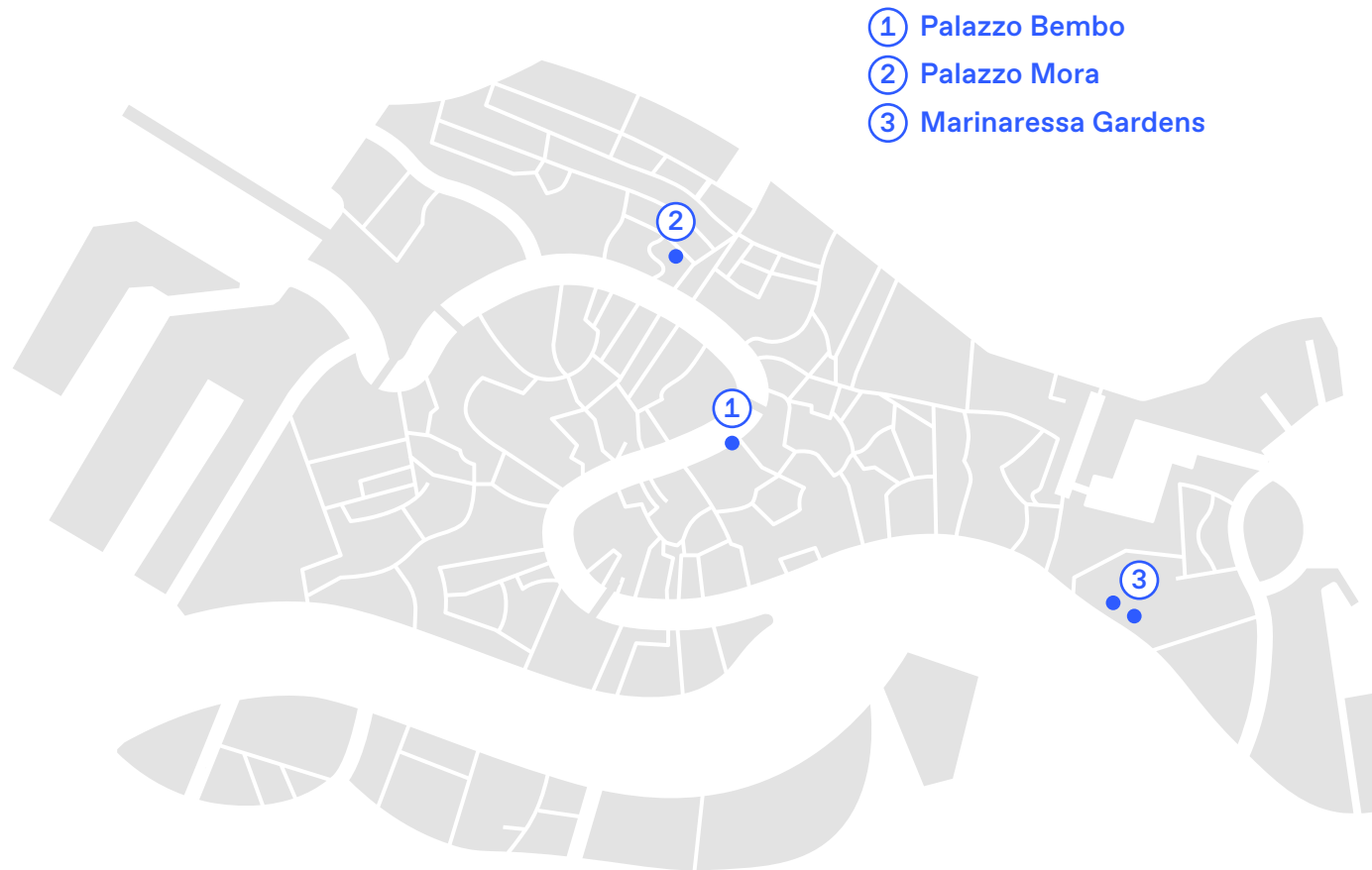
# ECC Venues

## Palaces & Gardens

Since the beginning of its activities in 2011 down to the present day, the ECC-Italy has been extending the exhibition spaces from a single location to four venues of more than 3.000 square meters indoors and 6.000 square meters outdoors.

Today the exhibitions are set in two Venetian palazzos and two gardens, each of which has its own particular atmosphere and curatorial guidelines. These include **Palazzo Mora, Palazzo Bembo and the Marinaressa Gardens.**

The palaces are located alongside the Canal Grande while the Marinaressa Gardens, which we transform every year into an extraordinary sculpture park, are placed nearby the San Marco square and between the main venues of La Biennale di Venezia.



# Palazzo Bembo

The Palace

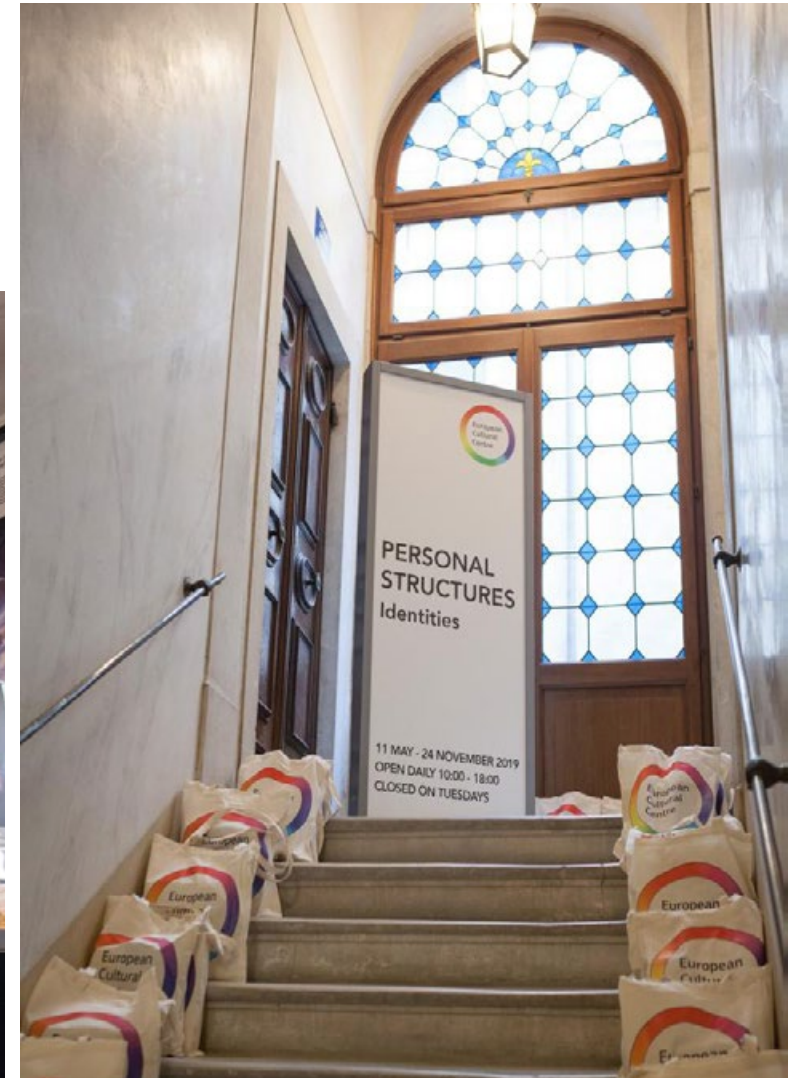
4793 Riva del Carbon  
San Marco, Venice

Palazzo Bembo and its magnificent façade to the Canal Grande executed in the Venetian Gothic style is situated near the Rialto Bridge. The palace itself has been committed by the noble Bembo family in the 15th century. Despite the interior has been modified several times during the past centuries, the exterior is still maintaining its original appearance. Due to the collaboration between the current owner of the palace and the ECC it appears in the glory of the past centuries after some years of vacancy. The two noble floors of the palace are hosting since 2011 high quality exhibitions.



# Palazzo Bembo

The Palace

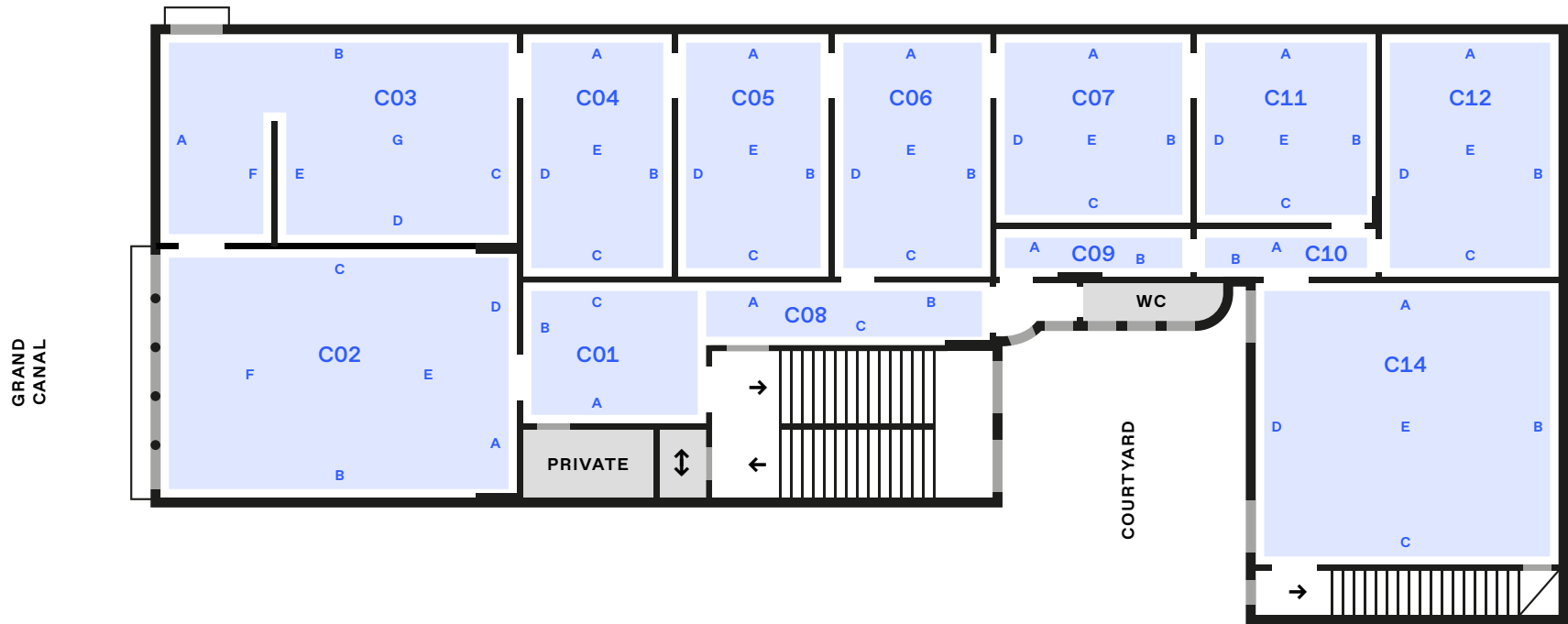


^ The staircase of the palazzo ready to receive visitors, opening 2019

< Room #8 during the opening of Time Space Existence 2018

# Palazzo Bembo

1<sup>st</sup> Floor

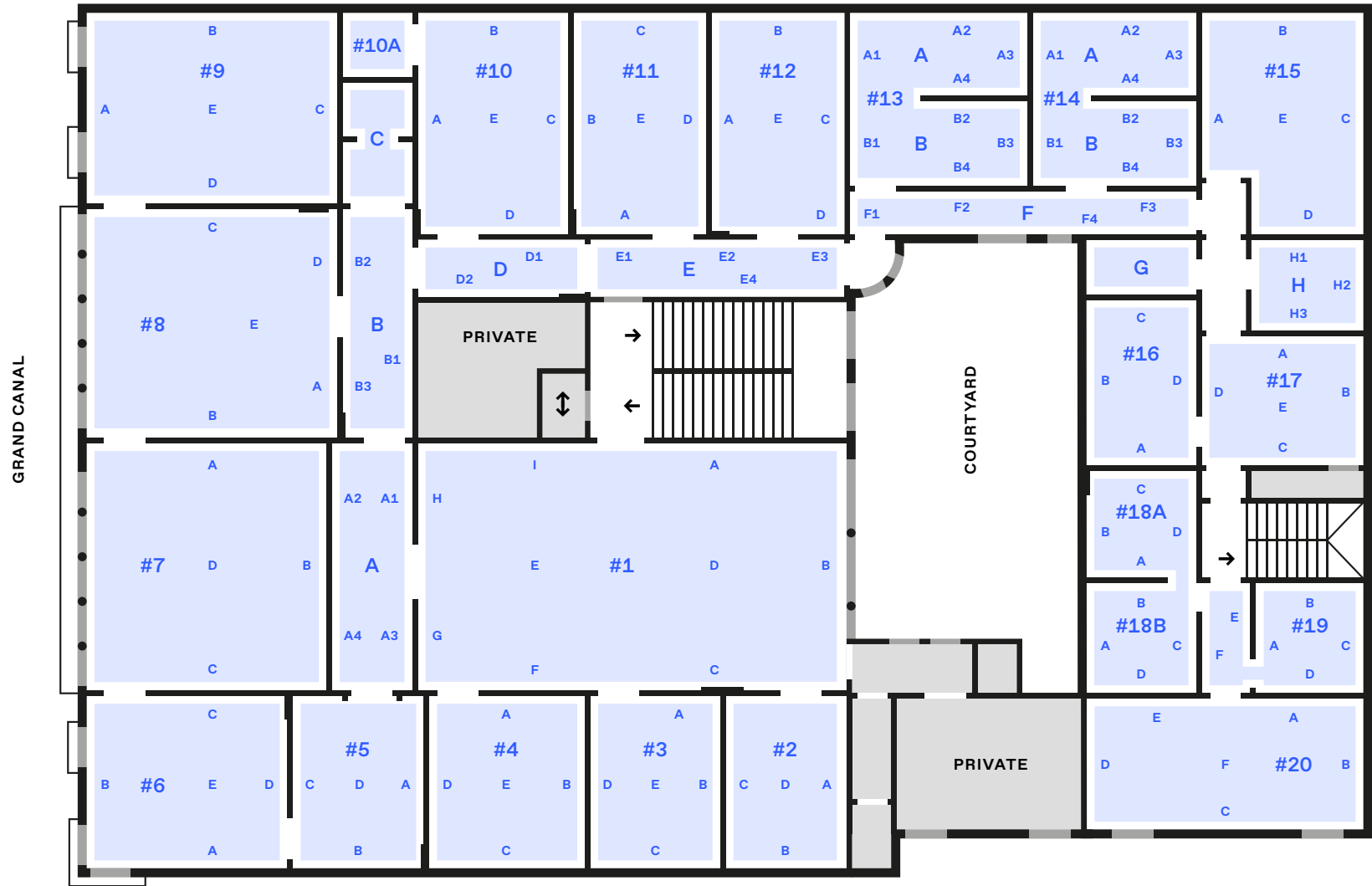


ROOM	HIGHT	SPACE
C01	4.6H	
C02	4.9H	63M <sup>2</sup>
C03	4.7H	53M <sup>2</sup>
C04	2.5H	26M <sup>2</sup>
C05	2.5H	26M <sup>2</sup>
C06	2.5H	26M <sup>2</sup>
C07	2.5H	25M <sup>2</sup>
C08	2.6H	
C09	2.6H	
C10	2.5H	
C11	2.5H	25M <sup>2</sup>
C12	2.5H	32M <sup>2</sup>
C14	2.3H	57M <sup>2</sup>

# Palazzo Bembo

## 2<sup>nd</sup> Floor

ROOM	HIGHT	SPACE
#1	4.0H	83M <sup>2</sup>
#2	3.7H	17M <sup>2</sup>
#3	3.7H	19M <sup>2</sup>
#4	3.7H	20M <sup>2</sup>
#5	3.7H	20M <sup>2</sup>
#6	3.7H	30M <sup>2</sup>
#7	4.0H	50M <sup>2</sup>
#8	3.5H	49M <sup>2</sup>
#9	3.6H	40M <sup>2</sup>
#10	3.7H	28M <sup>2</sup>
#10A	3.2H	
#11	3.5H	25M <sup>2</sup>
#12	3.6H	28M <sup>2</sup>
#13	3.6H	25M <sup>2</sup>
#14	3.6H	23M <sup>2</sup>
#15	3.4H	28M <sup>2</sup>
#16	4.0H	13M <sup>2</sup>
#17	3.6H	17M <sup>2</sup>
#18A	3.2H	6M <sup>2</sup>
#18B	3.9H	7M <sup>2</sup>
#19	3.7H	15M <sup>2</sup>
#20	4.2H	30M <sup>2</sup>
A	4.1H	
B	3.5H	
C	3.6H	
D	3.7H	
E	3.7H	
F	3.7H	
G	3.8H	
H	3.6H	



# Palazzo Bembo

## Solo Spaces Examples

**1. Laura Shill & Joel Swanson, USA**

Room #3, Personal Structures 2019

**2. Vita Buivid, Russia**

Room C03, Personal Structures 2017



# Palazzo Bembo

## Solo Spaces Examples

### 3. Federico Uribe, Colombia

Room #8, Personal Structures 2019

### 4. Rene Rietmeyer, The Netherlands

Room #9, Personal Structures 2013





# Palazzo Bembo

## Shared Spaces Examples

**1. Davor Ljubcic, Andrea Matheisen, Ty Waltinger; Germany**

Room #15, Personal Structures 2017

**2. Johann Feilacher, Graham Hay, Susan Seubert, Sibyl Heijnen; Austria, UK, USA, The Netherlands**

Room #1, Personal Structures 2017

**3. Heinrich Bobst; Silvio Santini; Switzerland, Italy**

Room #8, Personal Structures 2017



# Palazzo Bembo

## Special Spaces Examples

### 1. Avner Sher, Israel

Space A, (A2 & A4), Personal Structures 2017

### 2. Apollonia Vanova, Beat Kuert; Canada, Switzerland

Space B, Personal Structures 2017

### 3. Han Ho, South Korea

Room #17, Personal Structures 2015



# Palazzo Mora

The Palace

3659 Strada Nuova  
Cannaregio, Venice

Palazzo Mora is located between the church of San Felice and the Canal di Noale in the district of Cannaregio. It has been constructed in the 16th century but the Mora family bought it in 1716. The noble floor shows some frescoes attributed to Tiepolo and executed from 1720 to 1770. The exhibitions are taking place at the two main floors, the mezzanine floor, the third floor and the entrance garden. Due to the position of the palace at the crowded Strada Nuova and the dimensions of the exhibition itself Mora Palace counts a large number of visitors.



# Palazzo Mora

The Palace



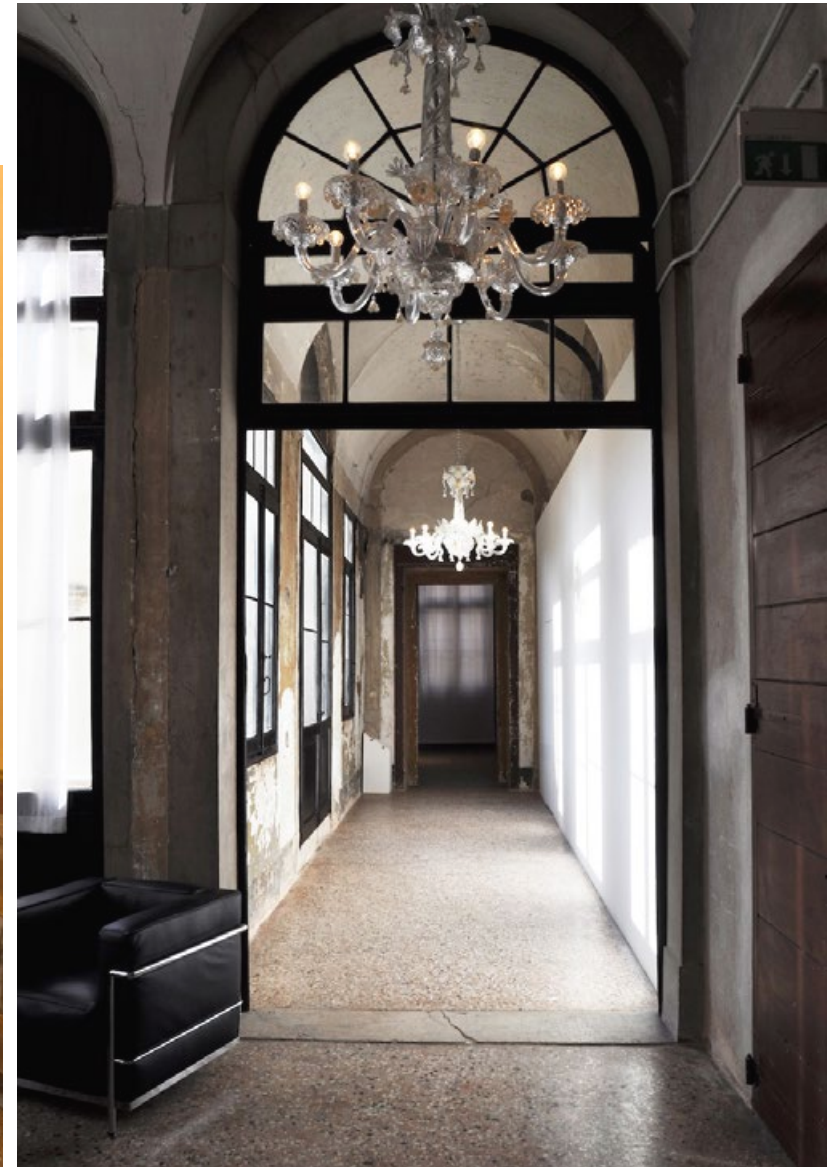
^ The terrace and the garden during the opening

< The staircase of the Palazzo during an opening

# Palazzo Mora

## The Palace

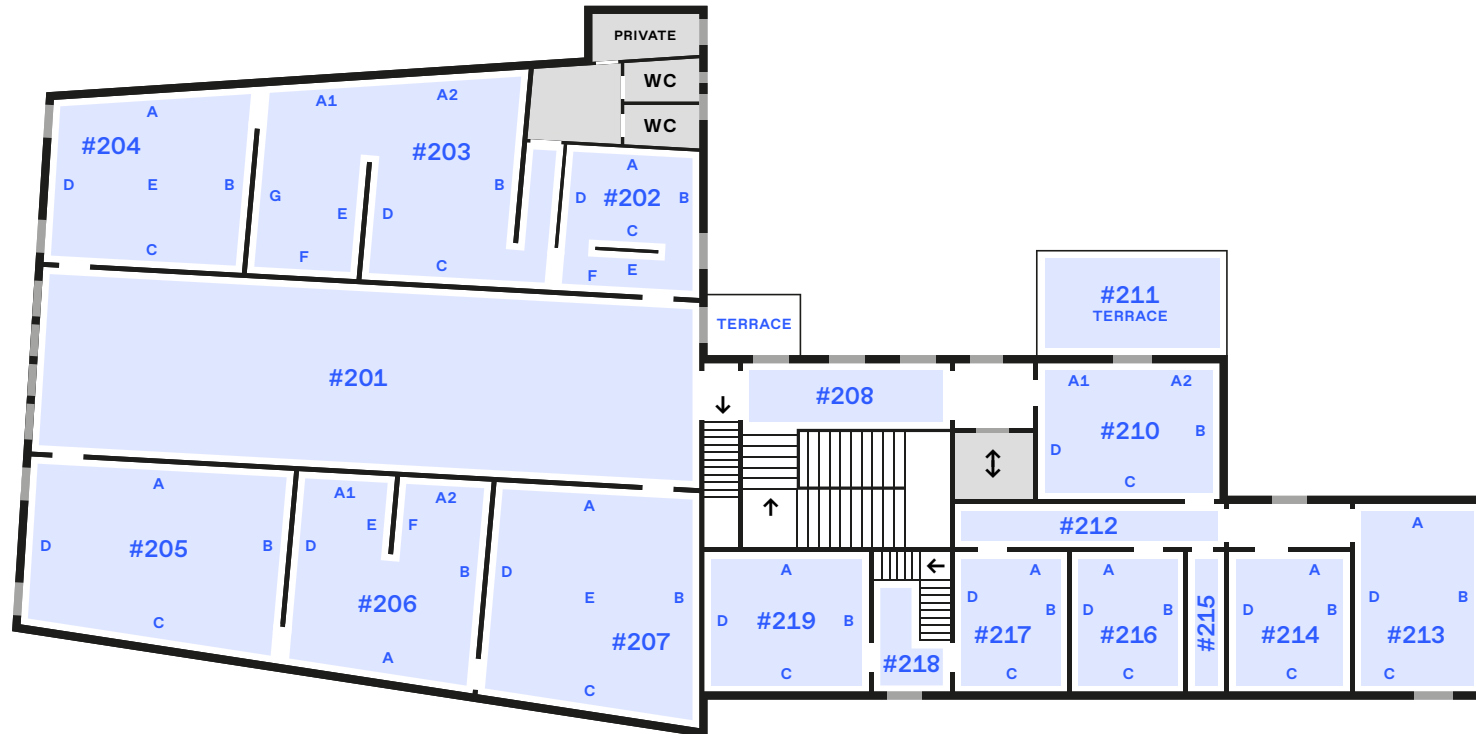
- > One of the corridors of the Palazzo
- > Ballroom A with various projects during Time Space Existence 2018



# Palazzo Mora

# 1<sup>st</sup> Floor



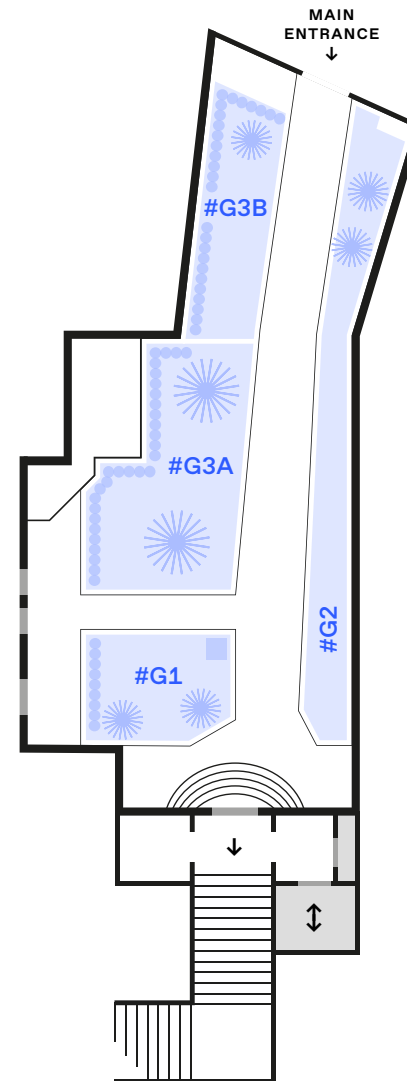


ROOM	HIGHT	SPACE
#201	3.0H	132M <sup>2</sup>
#202	3.0H	23M <sup>2</sup>
#203	2.9H	62M <sup>2</sup>
#204	2.7H	37M <sup>2</sup>
#205	2.8H	53M <sup>2</sup>
#206	3.0H	44M <sup>2</sup>
#207	3.0H	47M <sup>2</sup>
#208	2.9H	
#210	4.8H	29M <sup>2</sup>
#211		
#212	3.5H	14M <sup>2</sup>
#213	3.5H	27M <sup>2</sup>
#214	3.5H	21M <sup>2</sup>
#215	3.5H	6M <sup>2</sup>
#216	3.5H	19M <sup>2</sup>
#217	3.5H	19M <sup>2</sup>
#218	2.9H	11M <sup>2</sup>
#219	3.0H	25M <sup>2</sup>



ROOM	HIGHT	SPACE
#3A	2.5H	5M <sup>2</sup>
#3A1	2.5H	47M <sup>2</sup>
#3B	2.7H	10M <sup>2</sup>
#3C	2.6H	17M <sup>2</sup>
#3D	2.6H	23M <sup>2</sup>
#3E	2.8H	44M <sup>2</sup>
#3F	2.8H	
#3G	3.1H	9M <sup>2</sup>
#3H	3.1H	9M <sup>2</sup>
#3K	1.9H	6M <sup>2</sup>
#3N	2.8H	
#3M	3→1H	22M <sup>2</sup>
#3P	2.7H	
#3Q	2.5H	
#3R	2.5H	





# Palazzo Mora

## Solo Spaces Examples

### 1. Yoko Ono, USA

Room #216, Personal Structures 2017

### 2. Elena Gual, Spain

Room #219, Personal Structures 2019



# Palazzo Mora

## Solo Spaces Examples

### 3. Skot Foreman Gallery, artist Purvis Young, USA

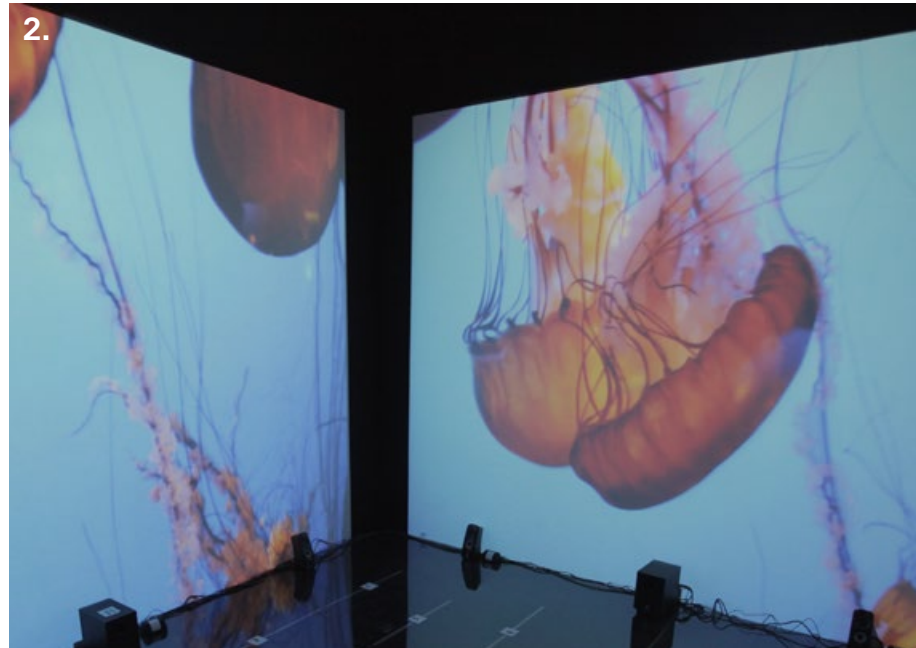
Room #1, Personal Structures 2019

### 4. Orly Aviv, UK

Room #10, Personal Structures 2015

### 5. Raffy Napay repr. by Artesan Gallery, Philippines

Room #10, Personal Structures 2019



# Palazzo Mora

## Shared Spaces Examples

**1. Hc Berg, Anne Curry, Per Hess; Switzerland, UK, Norway**  
Room #1, Personal Structures 2017

**2. Laurel Smith, Simon Kennedy; USA, Australia**  
Space 3E7, Personal Structures 2017

**3. Gerard Kuijpers, Karyn Taylor, Ryohei Kamaga;**  
**Belgium, New Zealand, Japan**  
Room #2, Personal Structures 2017



# Palazzo Mora

## Special Spaces Examples

### **1. Philippe Leblanc, Belgium**

Space #218, Personal Structures 2017

### **2. Martine Seibert Raken, Germany**

Space B and balcony, Personal Structures 2019

### **3. Peter Brake, UK**

Space 3M, Personal Structures 2019



# Palazzo Mora

## Garden Spaces Examples

### 1. Andrew Rogers, Australia

Garden, Personal Structures 2017

### 2. Manfred Kielnhofer, Austria

Garden, Personal Structures 2019

### 3. Carole Feuerman, USA

Garden, Personal Structures 2015



# Marinaressa Gardens

Riva dei Sette Martiri  
Castello, Venice

The gardens of the Marinaressa have been constructed in the Thirties of the 20th century and are located alongside the Riva dei Sette Martiri, a monumental shore of the city. The gardens are situated in the district of Castello in a short distance to the Piazza San Marco and in between the main venues of La Biennale di Venezia.

The gardens consisting out of the Levante Garden and the Ponente Garden have been managed from the ECC since 2017. ECC Italy “adopted” both gardens, completely renovating them for the local community in order to create two sculpture parks able to host installations and welcome the public.



# Marinaressa Gardens



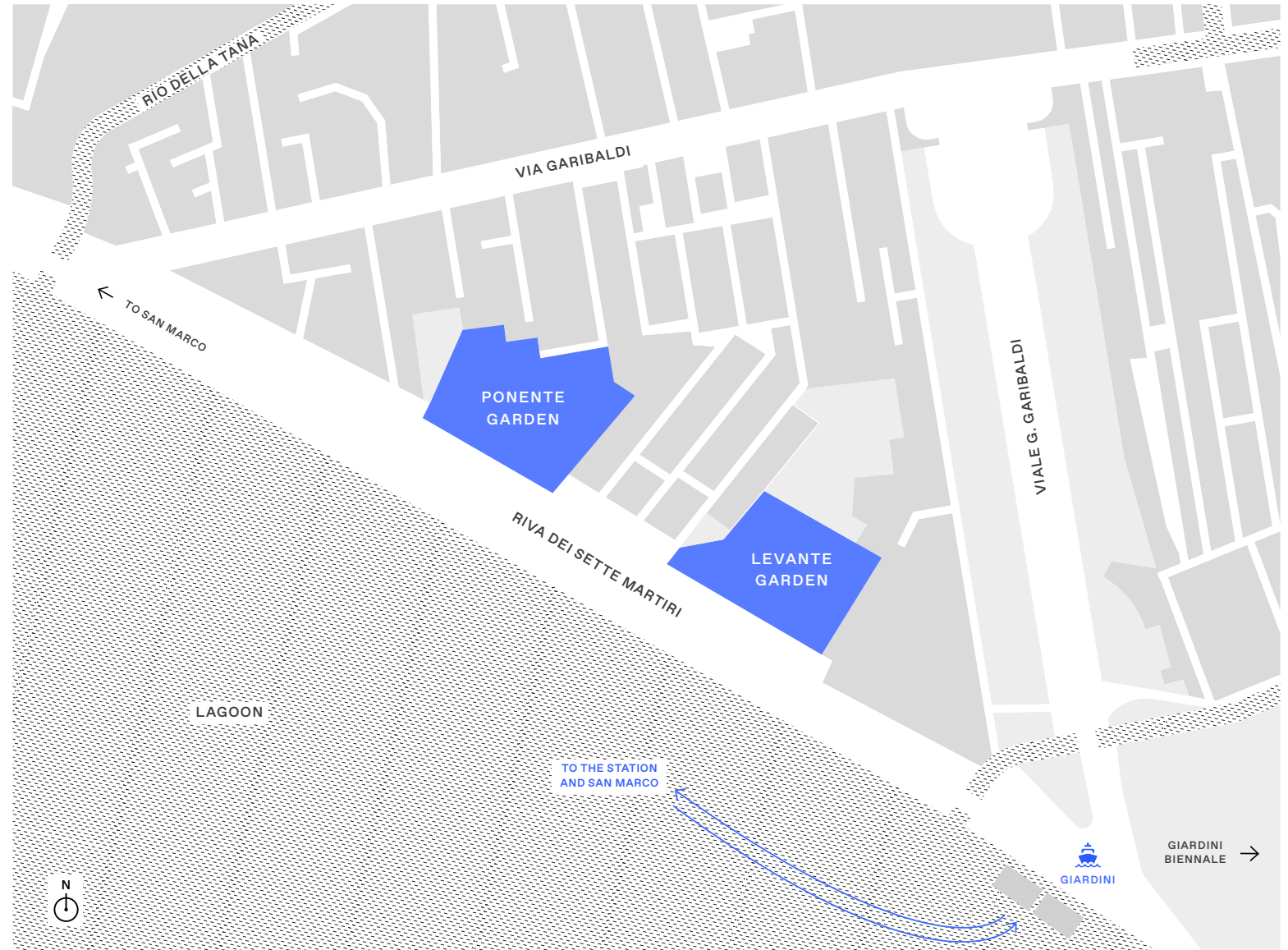
^ Levante Garden during  
the opening, 2016

< Ponente Garden during  
the opening, 2017



# Marinaressa Gardens

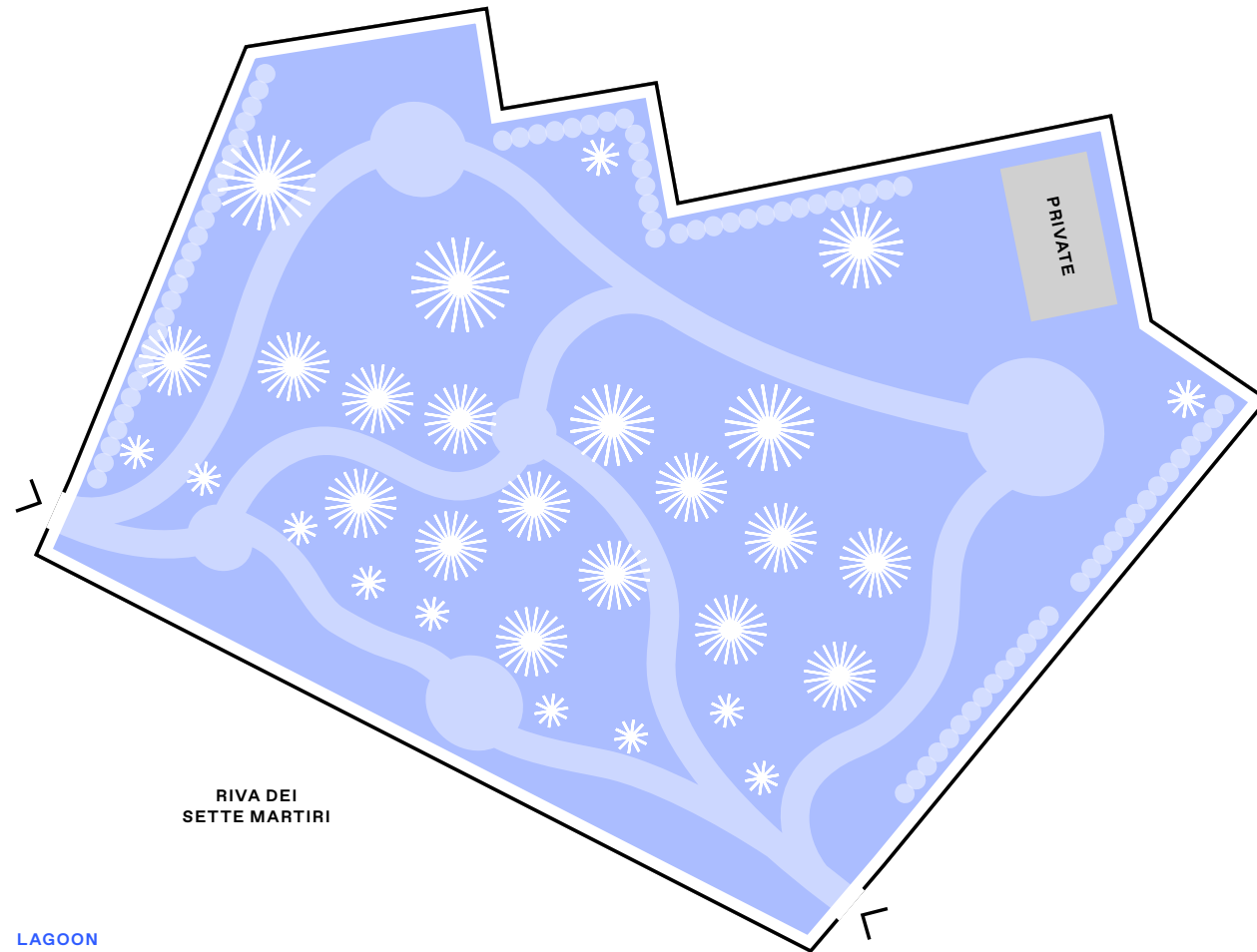
## Area Map



<u>PLACE</u>	<u>DISTA.</u>	<u>W.TIME</u>
SAN MARCO	1.1KM	15MIN
TRAIN STATION	3.3KM	40MIN
ACADEMIA	2.2KM	25MIN
F.TE NOVE	1.9KM	24MIN
ARSENALE	280M	3MIN
GIARDINI BIEN.	500M	6MIN

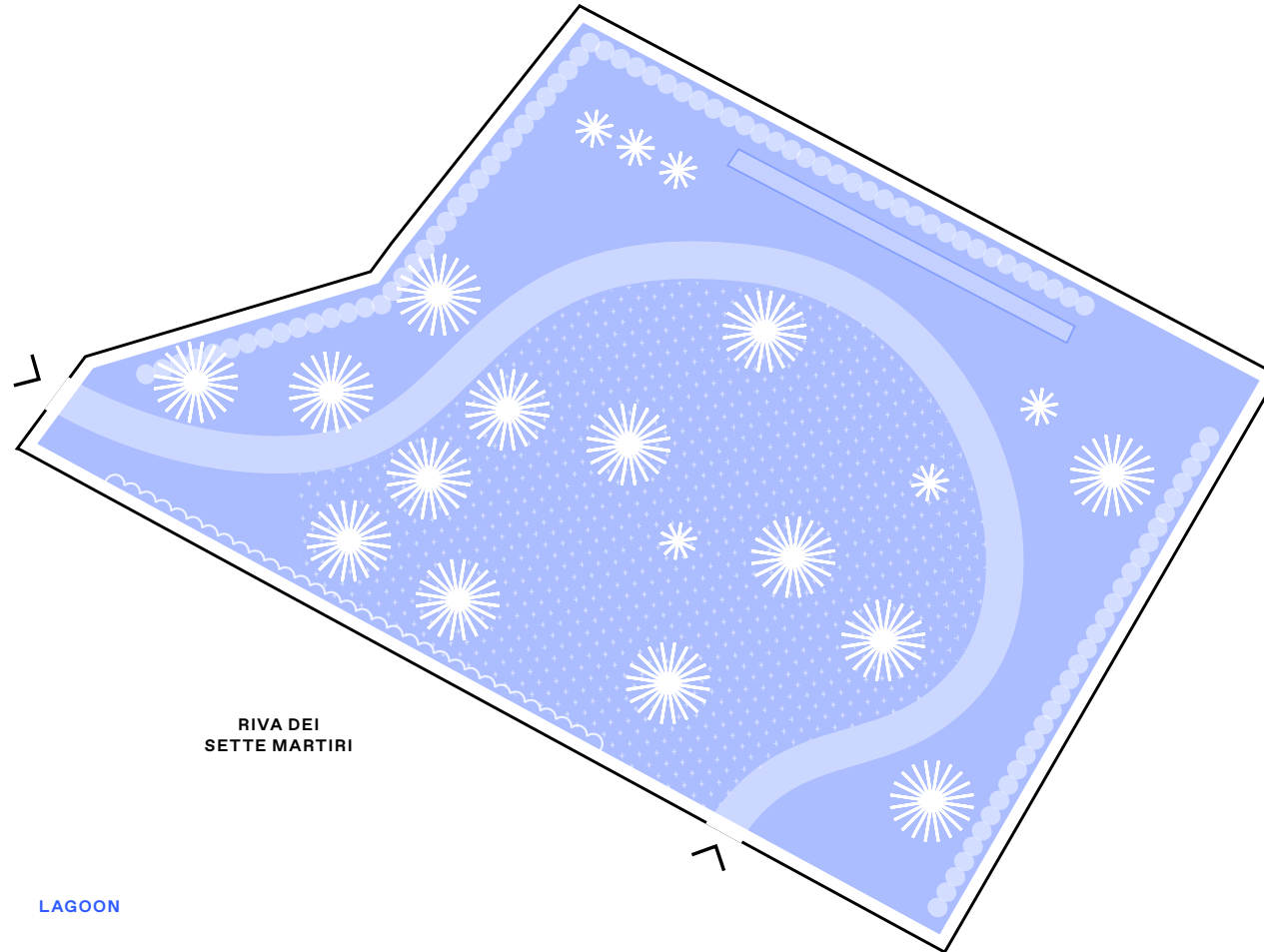
# Marinaressa Gardens

# Ponente Garden



# Marinaressa Gardens

# Levante Garden



# Ponente Garden

## Participants Examples

### 1. Carole Feuerman, USA

Ponente Garden, Personal Structures 2017

### 2. Barbara Grygutis, USA

Ponente Garden, Open Space 2020

### 3. Helaine Blumenfeld, USA

Ponente Garden, Time Space Existence 2018



# Levante Garden

## Participants Examples

### 1. Li-Jen Shih, Taiwan

Levante Garden, Time Space Existence 2018

### 2. Nadim Karam, Lebanon

Levante Garden, Personal Structures 2019

### 3. David Jacobson, UK

Levante Garden, Open Space 2020





# Information and Contacts

For further details feel free to contact  
our team and go visit [ecc-italy.eu](http://ecc-italy.eu)

---

Sara Danielli      [sara@ecc-italy.eu](mailto:sara@ecc-italy.eu)  
+39 348 791 7412

---

Lucia Pedrana      [lucia@ecc-italy.eu](mailto:lucia@ecc-italy.eu)  
+39 346 760 3386

---